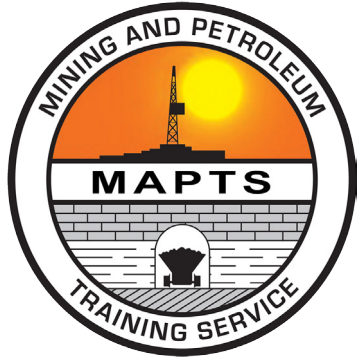


ONSITE MINE TRAINING ALASKA



MAPTS
CES SNRE
UAF

MAPTS celebrates 40 years serving the mining and oil & gas industries in Alaska!



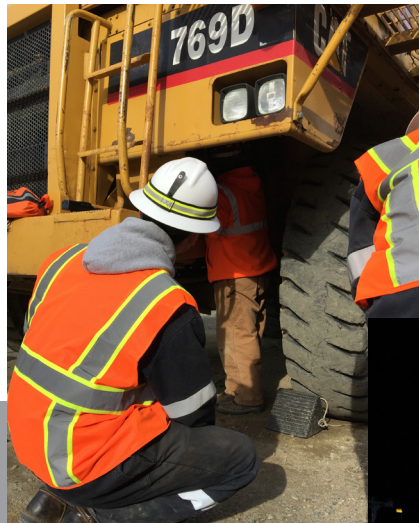
Mining and Petroleum Training Service (MAPTS) has a 40 year history of delivering training to Alaska's historically underserved Indigenous rural communities

Percentage of Indigenous Students served by MAPTS Program of Alaska students, 54% are Native of Canadian students, 92% First Nation

Culturally responsive training for Indigenous students develops industry-relevant skills supported by building trust between instructors & students

Tailored training for students who often lack formal work experience or advanced education

Participants are provided opportunities to practice interpersonal and work-life management skills needed to be successful in today's workforce



85% of MAPTS graduates are still employed 1 year after completion!

MAPTS has built successful partnerships with industry, federal, state and local entities and communities to facilitate successful recruitment of Indigenous participants, create better local economies, and benefit Tribal members, rural communities and Tribal services.



1/3 of MAPTS Remote Site Instructors are Alaska Native



For More Information, Contact:

Elizabeth Hardie, Program Coordinator eahardie@alaska.edu
William Bieber, Executive Director william.bieber@alaska.edu

Mining and Petroleum Training Service

Main Office:
162 College Road
Soldotna, Alaska 99669

(907) 262-2788 ph
MAPTS website: mapts.alaska.edu



PROFESSIONAL & WORKFORCE DEVELOPMENT

The University of Alaska Fairbanks is accredited by the Northwest Commission on Colleges and Universities. UAF is an affirmative action/equal opportunity employer and educational institution.



What Drives MAPTS Success?

MAPTS has developed a unique fast-tracked, PROVEN methodology that supports and builds on an Indigenous student's learning style and fosters confidence by providing a culturally relevant training style. Our approach of See-Learn-Do is balanced with easily understood and visually demonstrated hands-on instruction, clear and achievable goals and expectations. Encouragement, support and feedback provided by instructors results in a highly successful experience for each individual student.

That said, this is not an easy course. **The student's success is earned by their 100% commitment to learning.**



Our "soft skills" training challenges the student to strive to do their very best by setting personal goals and venturing outside of their comfort zone. As the student self-identifies past patterns that didn't result in positive personal and work-related outcomes, the student experiences amazing interpersonal growth and often sees a shift in their approach to managing life's challenges.



With the expansion four years ago of MAPTS' multi-industry training site which is situated in Interior Alaska, 30 miles southwest of Delta Junction, MAPTS has delivered its training to an audience of multi-cultural participants from rural villages and urban areas across Alaska and Canada.

Our Indigenous students have had winning results with a program that delivers hands-on training by a team of instructors whose instructional style resonates with a unique delivery style that results in career opportunities for people entering the mining or oilfield industries.



Mining Certificate:

- Introduction to Remote Camp Life
- Employability & Personal Management Skills
- Environmental Sensitivities
- MSHA 30 CFR Part 48 Subpart A or B Training
- General Safety & Housekeeping
- Representative Company SOPs & Forms
- Surface Mine Operations
- Underground Mine Operations
- Mining Cycle Practicum (Load, Haul, Dump)
- Mining Machinery Practicum
- Drilling (Underground) and Ground Control
- General Maintenance Requirements
- First Aid & Emergency Procedures



TO VIEW
MAPTS VIDEO:
AIM PHONE
CAMERA AT
QR CODE



MAPTS Mining Courses

The Underground Mine Training Camp and the Surface Mining Operations Camp programs orient the student to the rigors of remote camp life and mining operations in a training mine that simulates activities of an actual underground and surface working mine. Students begin the program with MSHA compliance training, followed by a module that addresses employability skills. An important feature of the training develops and refines hand-eye coordination and muscle memory mastery as the student completes operational tasks required of underground heavy equipment operators using state-of-the-art multi-million dollar heavy equipment simulator. The simulated training is a testing ground that instills recognized Industry and manufacturer's best practices, policies and procedures prior to the student quickly advancing to hands-on operator training in the actual heavy equipment currently used in a mine. Students also participate in introductory scaling, bolting, jackleg drilling, mucking (LHD) operations and utility work. The training delivered within a ten (10) hour day, over two (2) fourteen-day shifts, incorporates a Soft Skills module which provides an essential life skills component that is reiterated throughout the program, as well as daily pre-shift, on-shift, and post-shift activities.

The Underground Mine Training Camp and the Surface Mine Training Camp satisfies exemplary workforce safety standards required in Alaska, the Yukon and across the United States and Canada and develops vetted, skilled workers.

Developing a skilled local workforce for all phases of the mining process is of significant value to the mining industry. It helps companies lower operating costs and reduces the need to move personnel from other parts of the country. In addition to reducing safety and environmental risks, it allows earned wages to remain local, within the State or Province.

MAPTS' team of competent instructors builds a culture of success in both the classroom and the industrial job site, with the goal of putting qualified Americans to work.